



VIVAX
METROTECH

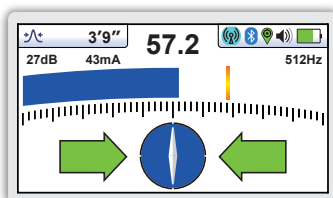
vLoc3-Pro

UTILITY LOCATOR

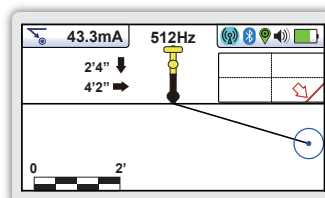
- Color-coded EM distortion warnings
- Offset locate modes - Vector and Plan View
- Optional receiver/transmitter link
- Cloud-based data warehousing
- Internal data logging
- Optional Bluetooth connectivity

The vLoc3-Pro utility locator introduces new innovative tools for locating buried utilities assuring damage prevention while gathering information for analysis. With two sets of screened 3D antennas signal distortion is easily detected and displayed on the bright full color display. Along with classic locate screens the vLoc3 series locators offer new locate perspective screens of Vector Locate for fully automatic non-walk over locating, Transverse Graph showing both peak and null simultaneously providing immediate measurement of signal distortion, Plan View showing the relative orientation of the cable at any angle, and a new graphical Sonde screen with guidance arrows leading to the sonde location even when it is vertical.

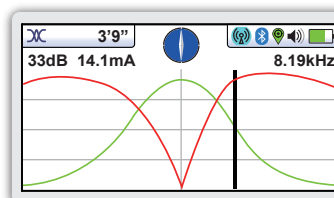
The highly user configurable vLoc3 series contains eight passive locate modes, fault-find mode, SD (showing direction of outgoing current), and a range of configurable frequencies from 98Hz to 200 kHz. Visual and mechanical vibration alerts can also be configured by the user providing warnings for shallow depth, overload, overhead cables, and excessive swinging. Plug-in-play options for the receiver include optional Bluetooth module usable with external GPS devices and MLA (marker locator adapter) to locate buried markers.



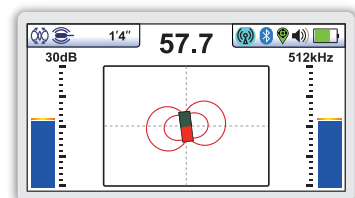
Classic Screen - as in previous vLoc locators, with the addition of three color-coded distortion levels



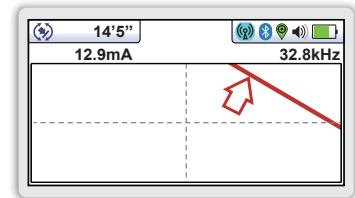
Vector Locate - shows orientation, line position, and distance relative to the locator in 3D



Transverse Plot Screen - is used to display the peak and null to compare distortion shape



Sonde Screen - arrow guidance showing direction to the sonde and depth of cover



Plan View Screen - displays the theoretical line in 2D from above ground in omnidirectional mode

Alkaline and Li-ion Batteries

- Alkaline = typically 12-hours intermittent use
- Li-ion = typically 27-hours intermittent use

USB Data Port

- Update the receiver's firmware
- Download datalogs

Accessory Port

- Remote Stethoscope Antenna
- A-Frame Fault locator
- Vehicle charging lead
- Charge Li-ion battery

Antenna Configuration

- Two sets of 3D Antennas
- Omnidirectional antenna array



Optional plug-in MLA marker locator

Tx-Link remotely controls transmitter functions from receiver
300m/985ft.



Ultra Bright LCD

- High visibility 4.3"/10cm LCD
- Auto backlight

Module Compartment

- Optional plug-and-play Bluetooth module

Data Logging

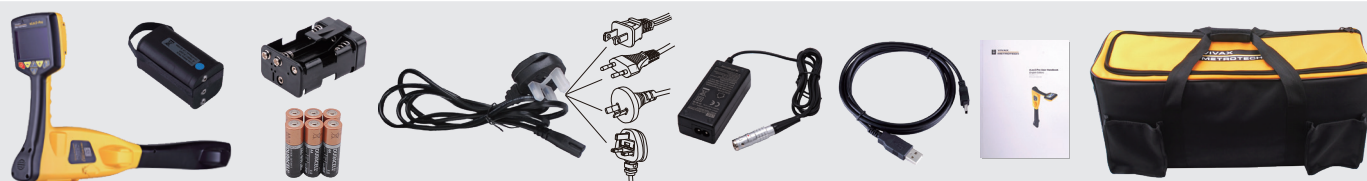
- 50 Million record internal storage
- GPS coordinates (if Bluetooth active)
- Download data with MyLocator app
- Access data VMMMap Cloud app

Construction

- High impact ABS plastic construction
- IP65 and NEMA 4 rating
- Lightweight at only 4.6lbs / 2.1kg

	vLoc3-Pro Receiver Specifications
Construction	High impact ABS injection molded housing
Weight & Dimensions	4.6lbs (2.1kg) / 12.6in(L) x 4.9in(W) x 26.6in(H) (321mm x 124mm x 676mm)
Display	Transmissive 480 x 272 Pixel, 16-bit Color, High Visibility 4.3"/10cm LCD
Battery options	Rechargeable custom Lithium-ion batteries with 100-240V AC mains charger Six x AA Alkaline batteries
Battery life	Lithium-ion – typically 27-hours intermittent use at 70°F (21°C) Alkaline – typically 12 hours intermittent use at 70°F (21°C)
Operating frequencies	Configurable frequencies from 98Hz to 200 kHz Power - 50Hz and 60Hz Radio - 10kHz - 22.7kHz bandwidth
Operating modes	Classic Locate (Bar graph), Transverse Graph Mode, Plan View (Omni Directional) Vector Locate (Lateral Position & Depth), Sonde Locate
Data logging and transfer	50 Million records - Records include depth, current, frequency, mode, gain setting, signal strength, GPS coordinate, date and time (if Bluetooth active) Download data from the receiver using the free MyLocator3 desktop app, save as xlsx, txt, shp and kml files
Environmental	IP65 and NEMA 4

What's in the box



Popular Accessories



Compatible Transmitters

1- Watt Transmitters



VM-550FF

5-Watt Transmitter



Loc3-5Tx

10-Watt Transmitter



Loc3-10Tx

Local Vivax-Metrotech Distributor:

Vivax-Metrotech Corporation

3251 Olcott Street, Santa Clara, CA 95054, USA

T/Free: 800-446-3392

Tel: +1-408-734-1400

www.vivax-metrotech.com

CONNECT WITH US ON SOCIAL MEDIA



V1.6

Please visit our website for full product specifications.

www.vivax-metrotech.com | www.vxmt.com